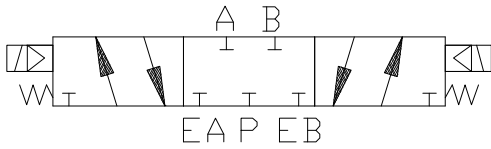
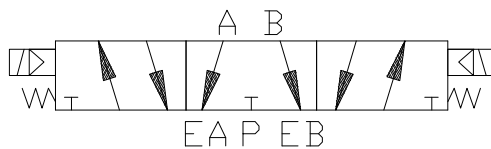
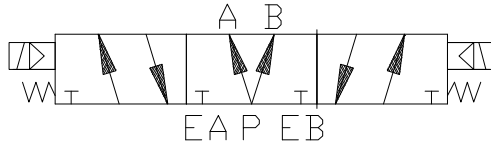


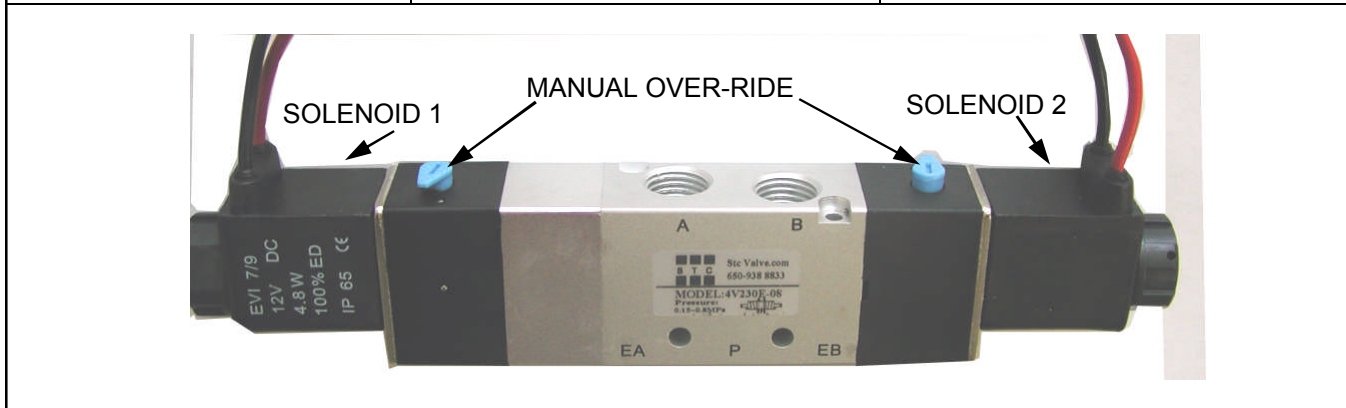
# STC Operating Procedure

## 3 Position 4 way Solenoid Valves

<p>SOLENOID 1 <span style="float: right;">2</span></p>  <p>VALVE POSITION 1 0 2</p>	<p><b>4V130-430C</b> (CLOSED CENTER VALVE)</p>
<p>SOLENOID 1 <span style="float: right;">2</span></p>  <p>VALVE POSITION 1 0 2</p>	<p><b>4V130-430E</b> (EXHAUST CENTER VALVE)</p>
<p>SOLENOID 1 <span style="float: right;">2</span></p>  <p>VALVE POSITION 1 0 2</p>	<p><b>4V130-430P</b> (PRESSURE CENTER VALVE)</p>

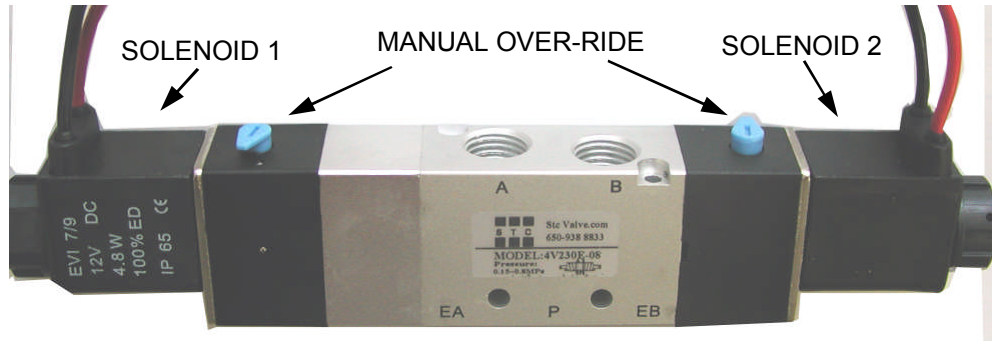
### 4V130-430 C, E & P SOLENOID VALVES

SOLENOID 1	SOLENOID 2	VALVE POSITION
OFF	OFF	0
ON	OFF	1
OFF	ON	2
ON	ON	0



# STC Installation and Operation Procedure

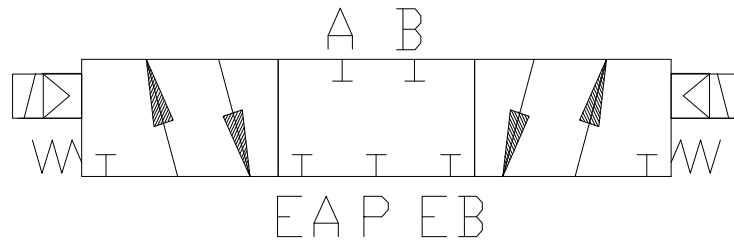
## 4V130C-4V430C Solenoid Valves for AIR BAG



### 4V130C-4V430C

SOLENOID 1

2



VALVE POSITION 1

0

2

#### A. Air Connections:

1. Connect supply air to Port P
2. Connect Port B to Suspension Actuator
3. Block off Port A

#### B. Electrical Connections:

1. If the solenoid has a red and a black wire, Connect Positive 12VDC to RED wire and Negative to Black wire.
2. If the solenoid has two same color wires, connect Positive 12VDC to one of the two wires and Negative to the other wire.

#### C. Operations:

1. When Solenoid 1 is OFF and Solenoid 2 is ON, Port P is connected to Port B. (Valve in Position 2)
2. When solenoid 1 is OFF and Solenoid 2 is OFF, All Ports are shut off. (Valve in Position 0)
3. When solenoid 1 is ON and Solenoid 2 is OFF, Port P is connected to Port A, which is Blocked. (Valve in Position 1)



**Sizto Tech Corporation**

892 Commercial Street  
Palo Alto, CA 94303 USA  
Tel: 650-856 8833, Fax: 650-856 8811  
Email: Sales@StcValve.com; www.StcValve.com